

COLOUR HARDENER

Dry-shake screed floor finish

A granolithic concrete material that is floated into fresh screed or concrete which colours, strengthens and creates durable surfaces for concrete floors. It is a special blend of cement incorporating very hard-wearing aggregates, light fast pigments and additives which set rock-hard.

Creating distinctive cement finishes
as *unique* as you are.

ICEMCRETE[®]

Manufacturers of Distinctive Decorative Coatings



Colour Hardener Cobble Milk

The colours depicted are a guide only and Cemcrete recommends choosing colours from an actual on-site sample. Different sealing methods might also affect the final colour.



Benefits

- Can be used for interior & exterior floors
- Suitable for domestic or commercial projects
- Colours concrete to a depth of 2-3mm - No risk of colour being rubbed off or abraded
- Extremely durable (but is dependent on screed mix and curing)
- Can be used in conjunction with SuperScreed (10-20mm) where there are height restrictions
- Can be imprinted with patterns

Specifications

Suitable Surfaces	Interior & exterior concrete or screed base
Finish	Steel floated to a smooth finish Textured, stamped or rolled to obtain different tiled or paved effects
Thickness	Depending on screed design - colour penetrates 2-3mm into screed
Application	Sprinkle-on and trowelled
Packaging	20kg bag
Coverage	Approximately 5m ² per 20kg bag
Curing	Leave to air cure for 1 day after completion Damp down with water twice daily for 4 days Allow to dry for a minimum of 14 days before sealing
Colour/s	Available in 15 colours

Intended for use with

PrimerCote & FlexBond mix	5kg PrimerCote - 10-15m ² 1, 5 & 20 litre FlexBond Combine 1 part Cemcrete's concentrated FlexBond to 2 parts clean water. Add PrimerCote to the mixed FlexBond in the ratio 3 parts powder to 2 parts of the liquid. Application should be "wet on wet" with the screed.
SuperScreed	40kg bags – 0.9m ² per litre
Colour Hardener Sealer	1, 5 & 25 litre – 6m ² per litre
Colour Hardener Sealer Slip-Resistant	1 & 5 litre – 6m ² per litre

Tools needed

- Perforated stamper
- Screed board
- Wood float or Plastic float
- Steel trowel
- Concrete edging tool and/or concrete jointing tool

Supporting Cemcrete Products

- Imprinting mats & Coloured Release Agent (when imprinting)
- CreteStain
- CreteCare Mop & Shine
- CreteCare Polish
- CreteCare Floor Polish Stripper

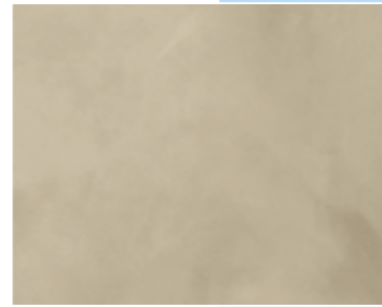
Colour Hardener Colour Range



White



Vanilla Bean



Stone



Cobble Milk



Cappuccino



Ochre



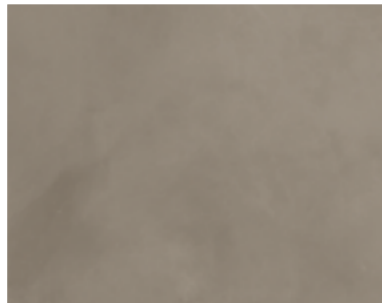
Ivory



Brown



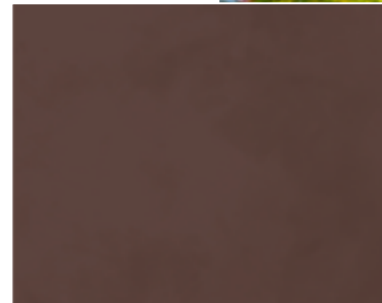
Timber Brown



Mocha Java



Chai Latte



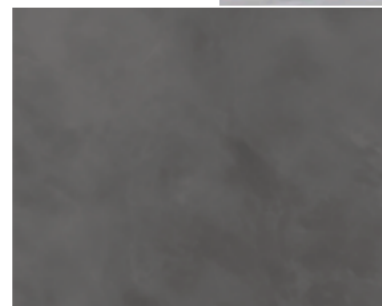
Espresso



Grey



House Blend



Slate



Did you know

Colour Hardener floors should be designed with expansion/control joints incorporated into them, which will minimize the risk of large unsightly cracks when subjected to large changes in temperature, soil or foundation movement etc. Panel sizes should be as symmetrical as is possible and should not exceed 20m².

Colour Hardener Stone

The colours depicted are a guide only and Cemcrete recommends choosing colours from an actual on-site sample. Different sealing methods might also affect the final colour.

Colour Hardener - Inlays

Did you know

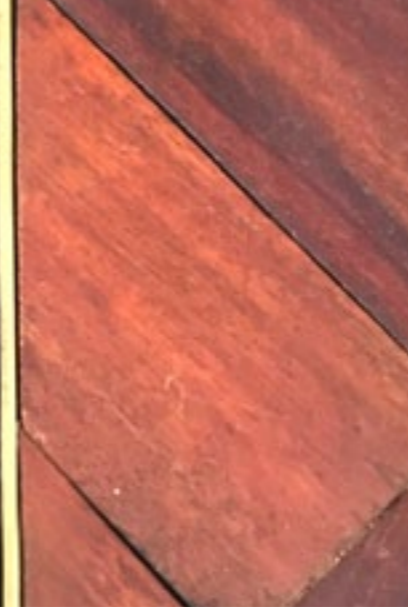
You can get creative and add some extra character to your floor finish by incorporating a tile, wood, aluminium strip, brick or pebble inlay. Alternatively, just cut standard lines which will create giant tiles.

Colour Hardener Grey joining with wooden floor using an aluminium strip



Colour Hardener Grey with a tile inlay

The colours depicted are a guide only and Cemcrete recommends choosing colours from an actual on-site sample. Different sealing methods might also affect the final colour.



Colour Hardener - Imprinted



Dust Coloured Release Agent onto the imprint mat. This will ensure that the mat doesn't stick to the surface. Place the mat carefully onto the surface. Stamp the imprint mat to transfer the texture onto the surface.



Remove the imprint mat carefully.

Did you know

Colour Hardener can be finished so as to create/duplicate natural effects such as slate, rock and wood sleeper textures and colours etc, by way of Cemcrete's imprinting system.

After 3 days wash surface to remove excess Coloured Release Agent.



Finished sealed floor - Colour Hardener Ochre imprinted with a slate texture.



Colour Hardener Stone with a brick inlay

0860 CEMCRETE

info@cemcrete.co.za

www.cemcrete.co.za



blog.cemcrete.co.za

HEAD OFFICE

Showroom & Warehouse

8 Telford Street

Industria

(011) 474 2415

info@cemcrete.co.za

GAUTENG

Johannesburg Showroom

227 Jan Smuts Avenue

Parktown North

(011) 447 3149

jsa@cemcrete.co.za

Centurion Showroom & Warehouse

15 Coachmen's Park

26 Jakaranda Street

Centurion

(012) 653 6808

pretoria@cemcrete.co.za

CAPE TOWN

Showroom & Warehouse

Unit 3 Eagle Park

cnr Bosmansdam & Omuramba Roads

Montague Gardens

(021) 555 1034

cape@cemcrete.co.za

We have distributors nationally, in most African countries and internationally. Contact us to locate your nearest stockist or contractor.

CEMCRETE®

Manufacturers of Distinctive Decorative Coatings

On the cover:
Colour Hardener Stone

The colours depicted are a guide only and Cemcrete recommends choosing colours from an actual on-site sample. Different sealing methods might also affect the final colour.